

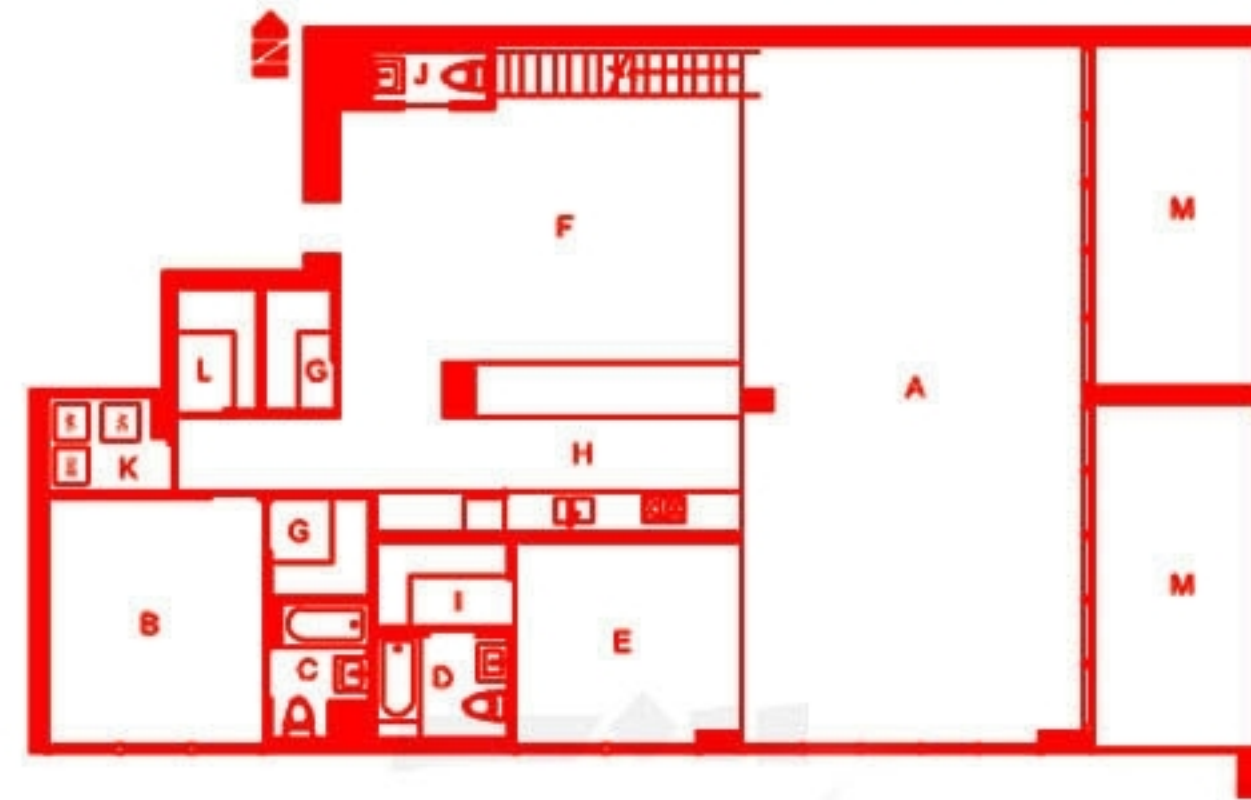
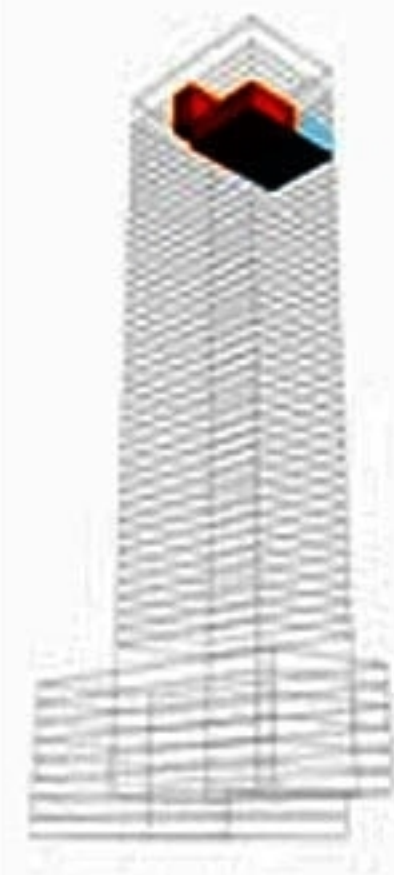
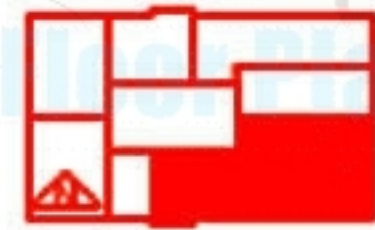
LOWER PENTHOUSE 01

3 bedrooms / 2 dens / 5.5 bathrooms

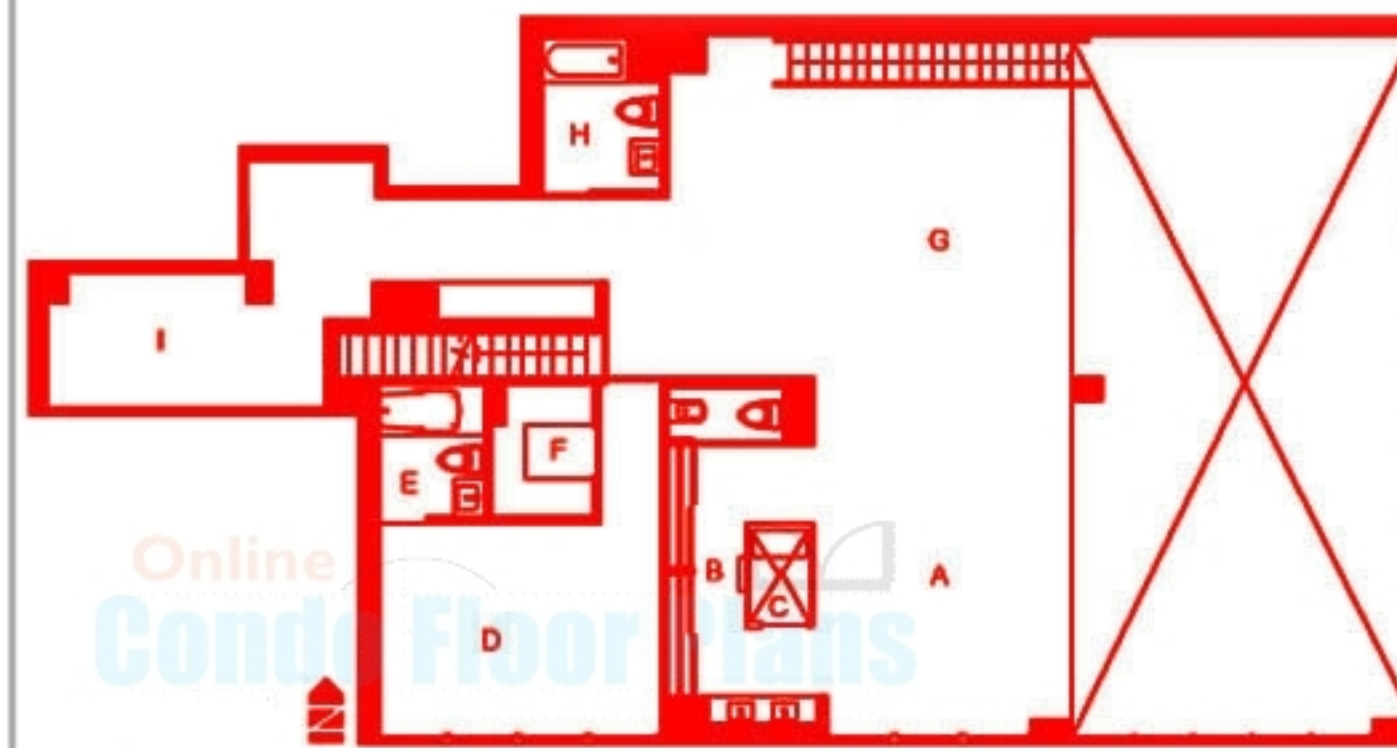
INTERIOR		EXTERIOR		TOTAL
L1	2318 sf	L1	389 sf	5057 sf
L2	1818 sf	L3	341 sf	470 m ²
L3	191 sf			
Total	4327 sf	Total	730 sf	

SPACES

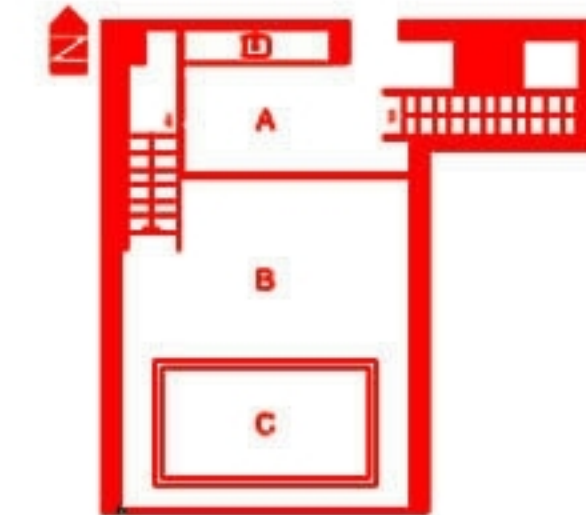
A GRAND ROOM	40'9" X 20'
B BEDROOM	14'5" X 12'8"
C BATHROOM	8' X 5'8"
D BATHROOM	6'1" X 7'9"
E DEN \ OFFICE	12' X 13'3"
F DINNING ROOM	23'7" X 21'6"
G CLOSET	
H KITCHEN	
I W.I.C.	5'2" X 7'9"
J POWDER	3' X 6'9"
K UTILITY ROOM	7'1" X 5'7"
L PANTRY	
M TERRACE	20' X 10'



L1




L2



L3

[download .pdf version](#)
[purchase](#)

 Prices, features, and specifications subject to change without notice. Oral representations cannot be relied upon as correctly stating representations of the developer. For correct representations by the developer, make reference to documents required by sections 718.503 Florida statutes, to be furnished by developer to a buyer or lessee. We are pledged to the letter and spirit of U.S. policy for the achievement of equal housing opportunity throughout the Nation. We encourage and support affirmative advertising and marketing programs in which there are no barriers to obtaining housing because of race, color, religion, sex, handicap, familial status or national origin.